

◆ TEACHER'S EDITION ◆

THE YOUNG MUSICIAN'S TEXTBOOK

intune

VOL. 22 • NO. 4

MONTHLY

BECOMING AN
**INDEPENDENT
ARTIST**

HOW TO PLAY

GIN BLOSSOMS'
"TIL I HEAR IT
FROM YOU"

ADDITIVE RHYTHMS

WICKEDLY POPULAR

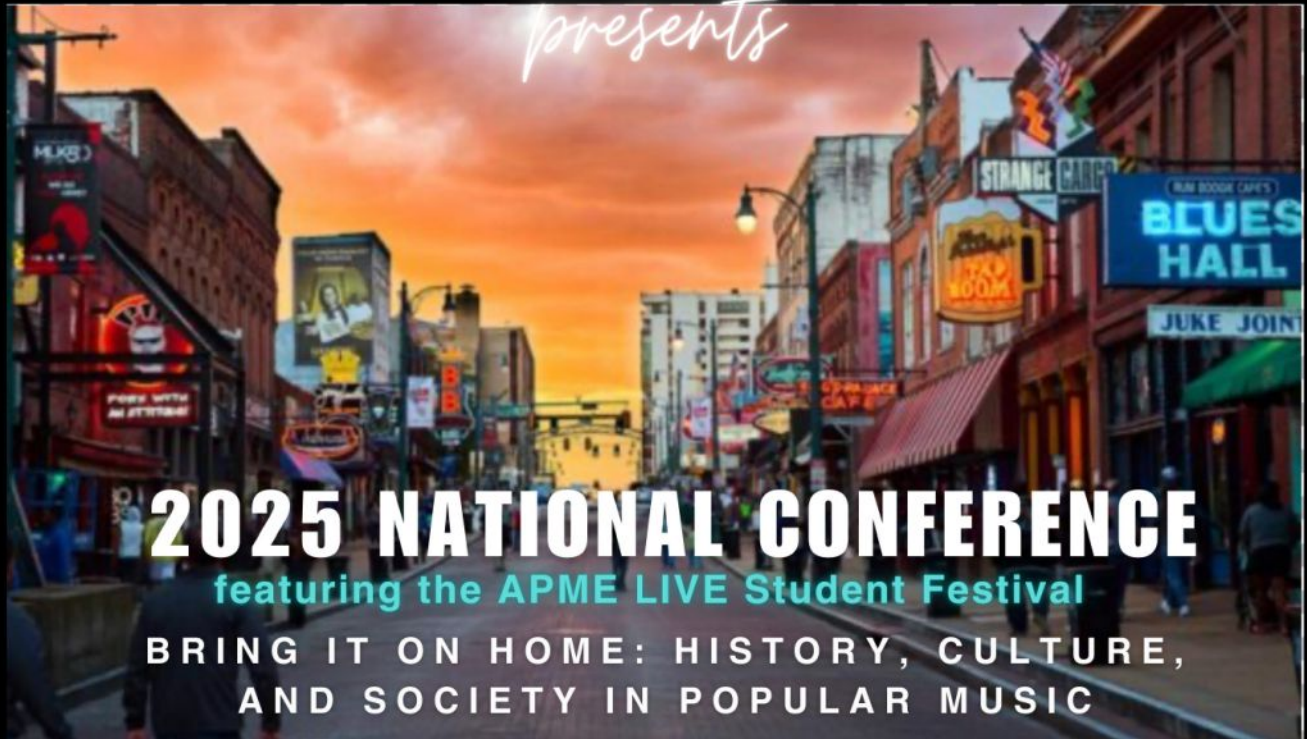
The soundtrack from the *Wicked* movie has the best chart debut ever for a film version of a musical

- ◆ **The Tao of In Tune**
- ◆ **Top 10 Skills Crucial for Effective Workforce Development**
- ◆ **Teaching Smarter With AI**
- ◆ **Website and Subscription Information**

APME

ASSOCIATION FOR POPULAR MUSIC EDUCATION

presents



2025 NATIONAL CONFERENCE

featuring the APME LIVE Student Festival

BRING IT ON HOME: HISTORY, CULTURE,
AND SOCIETY IN POPULAR MUSIC

UNIVERSITY OF MEMPHIS
MEMPHIS, TN JUNE 4–7, 2025

Three days of **networking, presentations, discussions, workshops, and performances** centered around popular music.

Deadline to submit: December 1, 2024

UPCOMING EVENTS

APME Graduate Student Conference Online –
Jan 17–18, 2025

APME International Conference-
dates & location TBA

For more information visit:
www.popularmusiceducation.org



All That's Fit To Print

IN THIS SPACE LAST MONTH we highlighted an element of In Tune's functionality, our narration capability. That letter is in the archive now, as part In Tune's December 2024 Teachers Edition (intune22te.digital). This letter is sort of a "part two," in that we'll now highlight In Tune's print and sharing functions.

Printing a page, a story or the whole of an In Tune issue is pretty easy; the three dots at the right side of the bottom bar that shows up when you run your computer's cursor to any border of any screen will take you to a dropdown menu containing the word "print." No mystery there. But what is interesting is when you get to the "print" screen, and you click the word "print," a box appears with the letters "pdf" in the lower left corner. On some computer or devices, you might need to select "destination" and save as a pdf. This means that you can save a page, a story, or the whole issue as an electronic file on your desktop and share it via email.

Nothing really amazing about that, but for classes without access to devices during the school day, or those interested in sharing In Tune electronically, creating a pdf will provide an easy way to share In Tune, and/or preserve any of our content you wish. ●

Teachers can go to intunemonthly.com/lessonplans for full lesson plans and videos. This month, lesson plans are available for the following stories:



Wickedly Popular

The soundtrack from the movie version of the prequel to *The Wizard of Oz* has the highest chart debut ever for a film adaptation of a stage musical. A love letter to the Broadway show, the movie adaptation of *Wicked* includes every song and scene from the original Broadway production, and in many cases expands on them.



Additive Rhythms

This month's "Techniques" column discusses how to string together short rhythms, turning them into longer, spiraling passages.



How To Play "Til I Hear It From You" by Gin Blossoms

Released as the lead single from the soundtrack to the film *Empire Records* in July 1995, "Til I Hear It From You" became a pop/rock hit the following year. A critic described it as "the closest thing to a perfect pop song to hit radio in recent memory," lauding its "breezy and wonderfully infectious melody, the boy-needs-girl lyrics, and earnest execution".



Exploring The Accordion

Over time, the accordion's popularity has had its ups and downs to say the least, but these days it's sound is welcomed and respected by players and fans of many genres. We dive into its history, development, and modern applications.

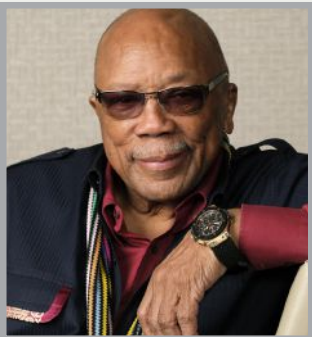
QUIZ ANSWERS: 1B, 2C, 3C, 4C, 5C, 6B, 7C, 8C, 9B, 10B

For more, go to intunemonthly.com/subscribe

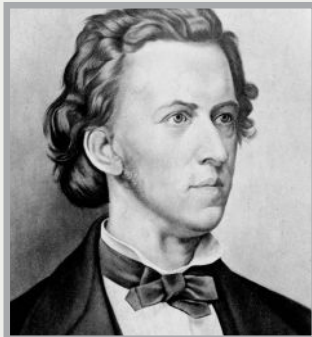
The Tao of In Tune

THIS MONTH'S IN TUNE COVER STORY LINKS UP with our "What Do You Do" column about careers in music in that while *Wicked* musical theater and film composer and lyricist Stephen Schwartz and TV soundtrack creator Matt Vander Boegh (his music provides the backdrop to reality stars' bickering, crime drama suspense, scenes of love and loss, the fanfares of champions, and the pulse-pounding ambiance of elimination shows,) rarely get a moment in the spotlight, these experts in composing music that pairs with and moves a plot may inspire some music students to pursue similar jobs.

Quincy Jones



Frédéric Chopin



Abi Carter



Mark Ambor



MUSIC NEWS

Our collection of music news is designed to keep music students aware of the broader music world around them. This issue's vignettes include "Quincy Jones's Last Honor," "Shazam's Mind-Boggling Milestone," "Lost Chopin Work Emerges from Museum Archives," "Why Your Generation's Music Feels Special," and more.

Zedd



Muddy Waters

INFLUENCES

Here's how the influences of German-born, L.A.-based EDM DJ and producer Zedd connect back through time to blues icon Muddy Waters.



MEDIA

Our monthly collection of music media features the new book *Band People*, by Landon Palmer, *Billboard's* podcast on "music's unsung heros" and a video in which Youtuber David Bennett breaks down how the new *Wicked* movie score pays tribute to the classic *The Wizard of Oz* soundtrack.

FRONTRUNNER

This month's Frontrunner column features another collection of artists on the rise, bracketed by a list of noteworthy songs curated with student musicians in mind. This issue's five are American Idol winner Abi Carter, singer/songwriter, producer, and multi-instrumentalist mk.gee, Armenian-American singer/songwriter Mark Ambor, singer/songwriter, producer, and multi-instrumentalist Max Frost and pop singer/songwriter Rosie Darling.



WHAT DO YOU DO?

Though his name might not be on the *Billboard* charts, Matt Vander Boegh's music is heard far and wide on shows like *Keeping Up With The Kardashians*, *The Real Housewives*, *Catfish*, *Love & Hip Hop*, and many more.

A composer specializing in music for reality television, Vander Boegh has amassed over 30,000 placements on over 1,000 shows.

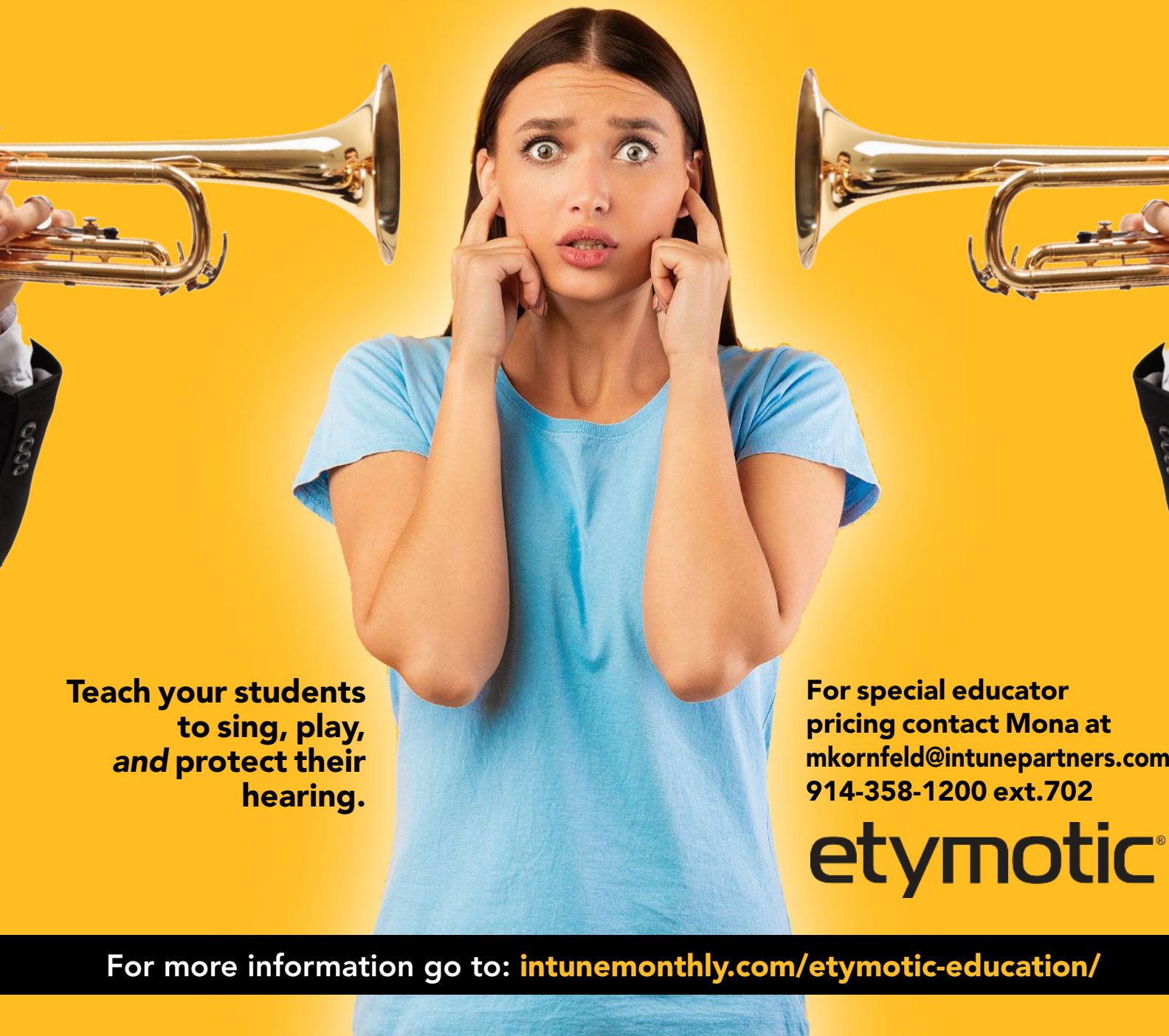


MEMORABLE MUSIC MUSEUMS

Since 1973, Vermillion, South Dakota's National Music Museum has provided visitors with a one-of-a-kind glimpse at the rich history of music, exploring every corner of musical history through artifacts, exhibits and galleries.

Sound Induced Hearing Loss is Cumulative and Irreversible

Etymotic's reusable earplugs *filter* sound rather than block it,
and they'll save your and your students' hearing.
They actually help musicians and teachers hear better!



Teach your students
to sing, play,
and protect their
hearing.

For special educator
pricing contact Mona at
mkornfeld@intunepartners.com
914-358-1200 ext.702

etymotic[®]

For more information go to: intunemonthly.com/etymotic-education/



The Top 10 Skills

Crucial for Effective Workforce Development... and How They Are Developed in Music

STUDENT PARTICIPATION in music ensembles not only develops technical musical skills but also cultivates a well-rounded set of soft skills that are crucial for thriving in the modern workforce. These experiences provide a dynamic and engaging way to prepare for personal and professional success. Be sure to share this “Top 10” list with your principal and district’s decision-makers to highlight how participating in music also contributes to these sought-after qualities.

1. COMMUNICATION

In music ensembles, communication goes beyond verbal interaction. Members must interpret and convey instructions through gestures, eye contact, and subtle cues during performances. Conductors rely on clear signals to guide musicians, while performers develop the ability to “listen” to each other musically, ensuring alignment in tempo, dynamics, and phrasing.

How it translates to workforce development: These

experiences foster strong interpersonal communication skills, essential for effective collaboration in professional settings, presentations, and cross-functional teamwork.

2. TEAMWORK

Success in an ensemble is only possible when individuals subordinate personal goals for the group’s success. Musicians must blend their parts to achieve harmony, synchronize with others, and support weaker sections to ensure an outstanding performance.

How it translates to workforce development: Collaboration is vital in workplace teams, and the cooperative skills honed in ensembles prepare individuals to function effectively within diverse groups, ensuring collective goals are met.

3. ADAPTABILITY

Musicians often face unforeseen circumstances, such as inclement weather affecting outdoor performances or quick adjustments re-

quired for a new conductor's style. Learning new music on short notice or performing in different venues cultivates resilience and adaptability.

How it translates to workforce development: Adapting to shifting priorities and unexpected challenges is critical in professional settings. Music education fosters the flexibility to adjust strategies while staying focused on objectives.

4. PROBLEM-SOLVING

During a performance, mistakes like missed notes or misalignments in choreography can occur. Musicians learn to recover seamlessly and creatively resolve these issues without disrupting the flow of the performance.

How it translates to workforce development: This ability to troubleshoot under pressure develops critical thinking and resourcefulness, essential for addressing workplace challenges with composure and innovation.

5. LEADERSHIP

Ensemble leaders, such as drum majors, section leaders, or captains, are responsible for guiding peers, organizing rehearsals, and fostering team morale. These roles offer firsthand experience in leading by example and managing group dynamics.

How it translates to workforce development: Music leadership teaches individuals how to inspire others, delegate responsibilities effectively, and build trust—key components of managerial and leadership roles in any industry.

6. EMOTIONAL INTELLIGENCE

Working closely with peers requires musicians to recognize and respond to others' emotions, whether it's resolving tension in a rehearsal or understanding the emotional impact of a piece of music. This deep engagement with emotions builds empathy and self-regulation.

How it translates to workforce development: Emotional intelligence is invaluable for navigating workplace relationships, managing stress, and fostering a positive organizational culture.

7. TIME MANAGEMENT

Balancing rigorous practice schedules, performances, academics, and personal commitments requires students to prioritize tasks and use their time efficiently. Planning ahead for concerts, competitions, and deadlines teaches discipline.

How it translates to workforce development: Strong time management skills help employees stay on schedule, juggle multiple projects, and maintain productivity under tight deadlines.

8. CRITICAL THINKING

Rehearsals require constant evaluation of performance quality—identifying areas for improvement and refining techniques. This ongoing assessment builds a mindset of continuous learning and constructive criticism.

How it translates to workforce development: Employees who can think critically are better at analyzing problems, devising creative solutions, and making informed decisions.

While musical training alone doesn't guarantee business success, the skills and qualities it develops—discipline, creativity, resilience, and emotional intelligence—are highly transferable to the business world.

9. WORK ETHIC

Practicing challenging music pieces or perfecting marching drills demands persistence and a commitment to excellence. Students learn the value of hard work, patience, and incremental progress.

How it translates to workforce development: A strong work ethic is a cornerstone of professional success, demonstrating reliability, diligence, and a drive for quality.

10. CONFLICT RESOLUTION

Ensemble members often face disagreements about interpretations, roles, or responsibilities. Learning to address these conflicts constructively while maintaining relationships is essential for the group's cohesion.

How it translates to workforce development: Workplace conflicts are inevitable, but the ability to mediate disputes and find common ground fosters a harmonious and productive work environment.

It is therefore not surprising that a study published in the *Journal of Business Research* found that individuals with musical training tend to exhibit higher levels of creativity and innovation, both of which are predictors of business success. High-profile business and government leaders with musical backgrounds include Paul Allen (Microsoft co-founder and guitarist), Condoleezza Rice (pianist), and Larry Page (Google co-founder, who played saxophone), just to name a few, suggesting a connection between musical engagement and entrepreneurial success.

While musical training alone doesn't guarantee business success, the skills and qualities it develops—discipline, creativity, resilience, and emotional intelligence—are highly transferable to the business world. This connection highlights the value of a well-rounded education that includes the arts as a foundation for diverse career paths. **T**



MARCIA NEEL serves as Senior Director of Education for Yamaha Corporation of America. She also serves as Education Advisor to the Music Achievement Council, a 501(c)(6) organization whose sole purpose is to assist directors in recruiting and retaining students in instrumental music programs through effective professional development. Marcia also serves as a member of the Board of Directors of Percussive Arts Society.



IT'S NO SECRET THAT being a music educator comes with a never-ending list of responsibilities. As educators, we often find ourselves navigating a maze of deadlines, paperwork, and logistical challenges. Administrative work—while essential—can be time consuming, and tasks like scheduling, email correspondence, student assessments, can compete with time for teaching.

But what if you could regain some of that time? Enter artificial intelligence (AI)—a powerful tool that can lighten the load of administrative tasks, allowing you to spend more time on teaching, music-making, and not to mention, your personal life. Here are several ways you can use AI tools to ease your workload and, in so doing, achieve better work-life harmony:

1. Automating Routine Communication

AI-powered tools like ChatGPT can help you draft professional responses, create templates and information sheets, and even summarize lengthy email threads. I use ChatGPT weekly to draft sensitive emails, write news blurbs for our weekly newsletters, and pen publicity notices. My bilingual parents were flabbergasted when I used DeepL to translate as I typed in real-time.

2. Simplifying Scheduling and Organization

AI scheduling tools like Calendly or Microsoft Bookings can take the back-and-forth out of arranging office hours, meetings, and advising sessions. AI-powered calendar assistants can also help you plan your day more effectively, ensuring you allocate time for deep work and personal breaks.

Need to organize your sectional schedule or accompanist rehearsal dates and time slots? AI can help! We plug in our parameters including



By Desiree Overree

**Orchestra Director,
Seven Lakes High School - Katy, TX**

TEACHING SMARTER WITH AI



student versus accompanist availability, and *voila*, a mistake-free schedule is born!

3. Lesson Planning and Goal Setting

AI-driven platforms such as Brisk Teaching, MagicSchool, or ChatGPT can create dynamic lesson plans and assist in creating and implementing professional development goals, although careful review and editing of generative content is highly recommended. For subjective assessments, AI can suggest feedback language or provide initial drafts for rubrics, which you can then refine for individual student needs.

For the past three years, my T-TESS goals and SLO have been neatly packaged by ChatGPT. I came up with the goals, but ChatGPT wordsmithed, added citations of the TEKS standards, and generated measurable goals, thoughtful differentiation strategies, engaging activities, planned assessments, and even suggested technology integrations. I've also used ChatGPT to help create my weekly lesson plans.

4. Enhancing Course Design and Creating Documents and Media

AI can support curriculum development by generating outlines, creating presentations, analyzing data, and even designing interactive content for your learning management system. With tools like Microsoft CoPilot or Canvas AI, you can spend less time on course logistics and more time refining the quality of your instruction.

From presentations to the concert, our program relies

heavily on media. We've used Canvas AI to create royalty-free stock images in our concert programs, used LumaLabs AI to create short video clips, and ChatGPT has written our concert scripts and program notes for the past three years.

5. Data Analysis

Of course you can spend hours sifting through spreadsheets to compile data, but Numerous AI gets it done much faster. Our EOY audition process can be quite daunting and cumbersome because of our 250+ musicians. One of the coolest things we used ChatGPT for was to extrapolate technical deficiencies in our students' performances. Since we take our audition notes using a spreadsheet, it was easy for ChatGPT to examine the data and extrapolate these weaknesses. Not only did it summarize all three directors' findings, it also created technical goals for mastery for the following school year.

Finding Balance with AI

While AI can save you significant time, the key to achieving work-life balance is setting boundaries and being intentional with your newfound time. Here's how to get started:

- **Define your priorities:** Decide what you'll do with the time you save. Will you invest it in mentoring students? Leveling up your already incredible course content? Spending quality time with loved ones?
- **Set work hours:** Use scheduling tools to mark your availability and respect those boundaries.
- **Delegate to AI wisely:** Not every task should be handed over to AI. Focus on repetitive or administrative work, while retaining control over tasks that require your personal touch.

Simply put, AI offers a lifeline. It's not about replacing your role as an educator but enhancing it—empowering you to focus on the parts of your job that matter and bring the most fulfillment. **T**

*This blogpost was mostly written by ChatGPT in about 2 minutes. The human editing the document took another 2 hours to finalize edits.



give a note™

FOUNDATION

CREATING BETTER HUMANS
THROUGH MUSIC!

LEARN MORE
VISIT
GIVEANOTE.ORG

Give A Note foundation is a 501(c)(3)

POP QUIZ

The following quiz questions can be used to test for comprehension or for general reading of this issue of *In Tune*.
(The answers are on page 3 of the Teacher's Edition.)

1. Before adapting *Wicked* for the stage, what did Stephen Schwartz have to do first?

- A. Get permission from L. Frank Baum's estate
- B. Convince Universal to release the musical rights
- C. Write a new version of the story
- D. Get approval from Gregory Maguire

2. According to the article, what is the expected songwriting output for a career songwriter per week?

- A. 1-2 complete songs
- B. 2-3 complete songs
- C. 3-5 complete songs
- D. 6-7 complete songs

3. The Gin Blossoms' "Til I Hear It From You" employs which musical ensemble format?

- A. Power trio with singer
- B. String quartet
- C. Quintet with two guitars
- D. Piano trio

4. What significant change did Schwartz and Holzman make to Maguire's original book when adapting *Wicked*?

- A. Changed the setting to modern times
- B. Added more characters
- C. Focused on the relationship between the two witches
- D. Made it a prequel to *The Wizard of Oz*

5. What is the maximum recommended time for a career songwriter to complete a first draft of a song?

- A. Two hours
- B. Three hours
- C. Four hours
- D. Six hours

6. In Example 3 of the additive rhythms article, what is the main focus?

- A. Creating complex rhythmic patterns
- B. Working with odd-metered phrases
- C. Mixing quarter and eighth notes
- D. Developing new time signatures

7. Which business aspect is specifically mentioned as essential for songwriters to understand?

- A. Marketing strategies
- B. Social media promotion
- C. Copyright and publishing
- D. Concert booking

8. According to the article, what unique musical influence does Zedd cite?

- A. Lady Gaga
- B. Other EDM artists
- C. Queen
- D. Jimi Hendrix

9. How did Schwartz and Holzman approach the song "One Short Day" for the *Wicked* film adaptation?

- A. As a traditional Broadway number
- B. Like a tourist guidebook to Oz
- C. As a dance sequence
- D. As a dramatic monologue

10. What technical skill is necessary for songwriters who write for other artists?

- A. Ability to play multiple instruments
- B. Proficiency with DAWs
- C. Advanced music theory knowledge
- D. Professional-level singing ability



BE A PART OF NAFME: WHERE MUSIC EDUCATORS BELONG

Join today: nafme.org/collegiate



- Engage in professional development opportunities
- Network with music educators nationwide
- Showcase leadership skills on your resume
- Participate in the annual Collegiate Leadership Advocacy Summit
- Advocate for music education at the local and national levels

collegiate@nafme.org | 800-336-3768



Now's the Time to Get Your Students **intune!**



In Tune Digital Magazine is accepting subscription orders for the 2024-2025 school year.

Act now to get your students **IN TUNE**. Order today to get eight issues of the digital magazine that addresses students' passion for music and helps you give them a well-rounded music education.

Digital Magazine

for all computers, tablets and mobile devices

Including the online In Tune Teacher's Edition

\$329.00 flat fee for unlimited subscriptions (open one-click access)

1-12 Subscriptions
\$24.95 per subscription (requires Username and Password)

- No extra charge for tax
- Includes access to online lesson plans and audio and video resources
- Digital copies of In Tune can be accessed by any device that can connect with the Internet

FILL IN TO ORDER MAGAZINES

Name _____

School _____

Street _____

City _____ State _____ ZIP _____

E-mail _____

Number of Magazine Subscriptions _____ Phone _____

Payment Enclosed Bill Me/PO# _____

For more information, call 914-358-1200 x702

In Tune's digital platform offers increased functionality including audio narration and printable pages.

Order online at www.intunemonthly.com

Or send this page by email to mkornfeld@intunepartners.com,

or fax this page to **914-741-1136**, or mail this page to:

In Tune, 55 Larry's Lane, Pleasantville, NY 10570

Order In Tune Books

Presenting a series of books for students and lesson books for teachers from the publishers of **In Tune Monthly** and **Music Alive!** magazines. Lesson books feature reproducible articles with lesson plans, and activities.

www.intunemonthly.com/product-category/books

